



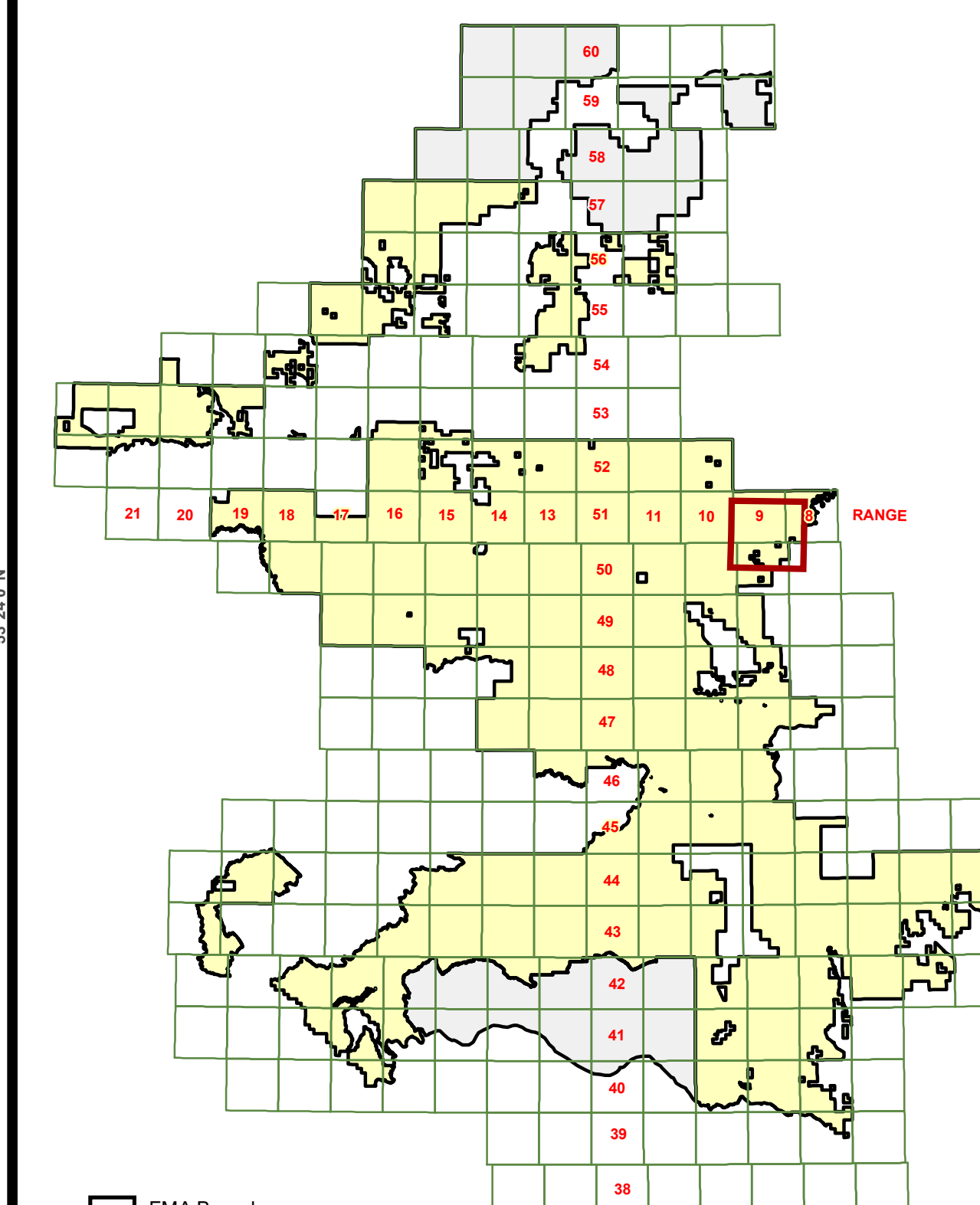
Weyerhaeuser

ALL INCIDENTS ARE PREVENTABLE

# ANNUAL OPERATING PLAN MAP

## Bigory, Chip lake AOP YEAR 2022

### INDEX MAP



- FMA Boundary
- Working Area
- Map Area

### ANNUAL OPERATING PLAN LEGEND

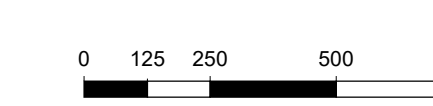
- |   |   |  |
|---|---|--|
| <b>AOP BLOCKS</b>   | <b>EXISTING CUTBLOCKS</b>   | <b>CROSSINGS</b>   |
| <ul style="list-style-type: none"> <li>C-P</li> <li>C-SB</li> <li>C-SW</li> <li>CD-P</li> <li>CD-SB</li> <li>CD-SW</li> <li>D</li> <li>DC-P</li> <li>DC-S</li> <li>No Strata</li> <li>Non-AOP Year</li> </ul> | <ul style="list-style-type: none"> <li>Weyerhaeuser</li> <li>Watercourse</li> <li>Retention</li> <li>Other</li> </ul> | <ul style="list-style-type: none"> <li>Equipment</li> <li>CSPP Culvert</li> <li>Log Fill</li> <li>Modified Log Fill</li> <li>Pipeline</li> <li>Powerline</li> <li>Snow Fill</li> <li>Bridge</li> </ul> |
| <b>NON-LIABILITY BLOCKS</b>   |   |  |
| <ul style="list-style-type: none"> <li>Cut</li> <li>Planned (P)</li> <li>Planned (LC, FA)</li> </ul>  |   |  |

### PLANIMETRIC LEGEND

- |   |  |
|---|--|
| <b>BOUNDARIES</b>   | <b>LAND USE (DIDS)</b>   |
| <ul style="list-style-type: none"> <li>FMA Boundary</li> <li>Working Area</li> <li>Township</li> <li>Section</li> <li>Quarter Section</li> <li>Private Land Inventory</li> </ul>  | <ul style="list-style-type: none"> <li>Reservation Dispositions</li> <li>Surface Dispositions</li> <li>Boundary Reservation Dispositions</li> <li>LAND USE (SUPPLEMENTAL)</li> <li>Operational</li> <li>MISCELLANEOUS</li> <li>POINTS</li> </ul> |
| <b>ROADS</b>  |  |
| <ul style="list-style-type: none"> <li>Divided Highway</li> <li>Paved Road</li> <li>Gravel Primary</li> <li>Gravel Road</li> <li>Truck Trail / Block Road</li> <li>Weyerhaeuser DLO</li> <li>Skid Trail</li> <li>Seismic Line</li> <li>Railway</li> </ul> |  |
| <b>TEMPORARY ROADS</b>  |  |
| <ul style="list-style-type: none"> <li>Constructed</li> <li>Planned</li> <li>Reclaimed</li> <li>Not Built</li> <li>Landing</li> </ul>   |  |
| <b>RECREATION TRAIL</b>   |  |
| <ul style="list-style-type: none"> <li>Undefined</li> <li>1 - Trapper Trails</li> <li>2 - ATV/Snowmobile Trails</li> <li>3 - Grazing Trails</li> <li>4 - Other (Specify in Comments)</li> </ul>   |  |
| <b>WATER</b>  |  |
| <ul style="list-style-type: none"> <li>Lake</li> <li>Large Permanent Stream</li> <li>Small Permanent Stream</li> <li>Transitional Small Permanent Stream</li> <li>Intermittent Stream</li> <li>Ephemeral / Indefinite Stream</li> </ul>                   |  |

Map Version: 3.01  
 Created for User: bill.taylor@weyerhaeuser.com  
 File Format: pdf  
 Page Size: 44x44  
 Date: March 22, 2022  
 Time: 07:46AM  
 Created with: Silvacom Maps Online

SCALE: 1:15,000



COPYRIGHT © 2022 WEYERHAEUSER COMPANY LIMITED. ANY USE, DUPLICATION OR DISTRIBUTION WITHOUT PERMISSION IS PROHIBITED.  
 THIS MAP WAS DEVELOPED USING AVAILABLE INFORMATION AND MAY NOT ACCURATELY REPRESENT THE LOCATION DEFINITION OR DISTRIBUTION OF LAND BASE FEATURES.

